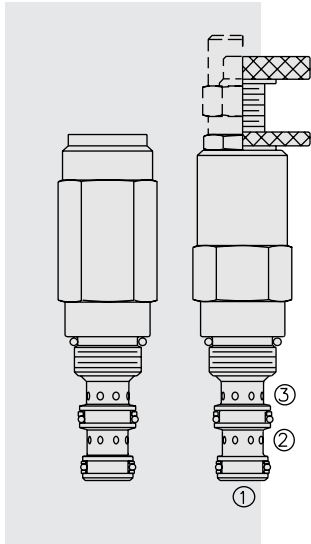
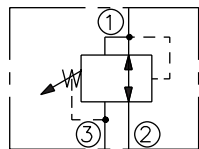


## PR08-32 Pressure Reducing/Relieving

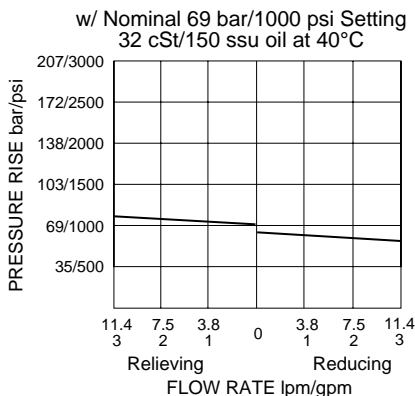


### SYMBOLS

#### USAS/ISO:



### PERFORMANCE (Cartridge Only)



### DESCRIPTION

A screw-in, cartridge-style, direct-acting, spool-type, hydraulic pressure reducing/relieving valve with internal pilot and internal spring chamber drain, designed to act as a pressure-regulating device for secondary circuits. It is intended for use in stable input flow circuits.

### OPERATION

In its steady state, the **PR08-32** allows flow to pass bidirectionally from ② to ①, with the spring chamber constantly drained at ③.

On attainment of a pre-determined pressure at ①, the cartridge shifts to block flow at ②, thereby regulating pressure at ①. In this mode, the valve also will relieve ① to ③ at a variable value over the set reducing pressure.

**Note:** Direct-acting PR series valves may not be suitable for some static load applications. Consult factory.

### FEATURES

- Adjustments cannot be backed out of the valve.
- Adjustments prohibit springs from going solid.
- Optional spring ranges to 152 bar (2200 psi).
- Hardened spool and cage for long life.
- Industry common cavity.
- Compact size.

### RATINGS

**Operating Pressure:** 240 bar (3500 psi)

**Proof Pressure:** 390 bar (5700 psi)

**Flow:** 11.4 lpm (3 gpm) max.

**Internal Leakage ② to ③:** 82 cc/minute (5 cu. in/minute) max. at 207 bar (3000 psi) to 90% of nominal setting

#### Standard Spring Ranges (Reducing Function):

- 3.4 to 20.7 bar (50 to 300 psi);
- 10.4 to 41.4 bar (150 to 600 psi);
- 20.7 to 82.8 bar (300 to 1200 psi);
- 34.5 to 151.7 bar (500 to 2200 psi)

**Temperature:** -40 to 120°C with standard Buna seals

**Filtration:** See page 9.010.1

**Fluids:** Mineral-based or synthetics with lubricating properties at viscosities of 7.4 to 420 cSt (50 to 2000 sus); See Temperature and Oil Viscosity, page 9.060.1

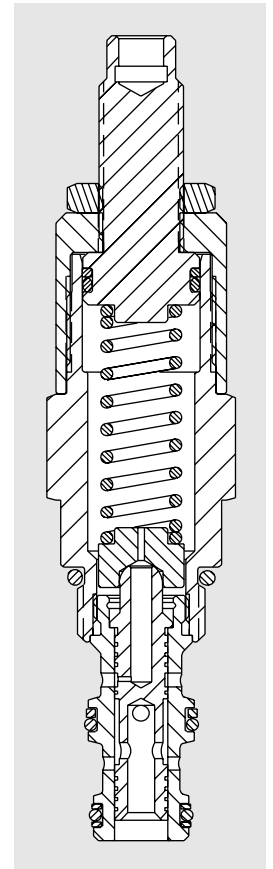
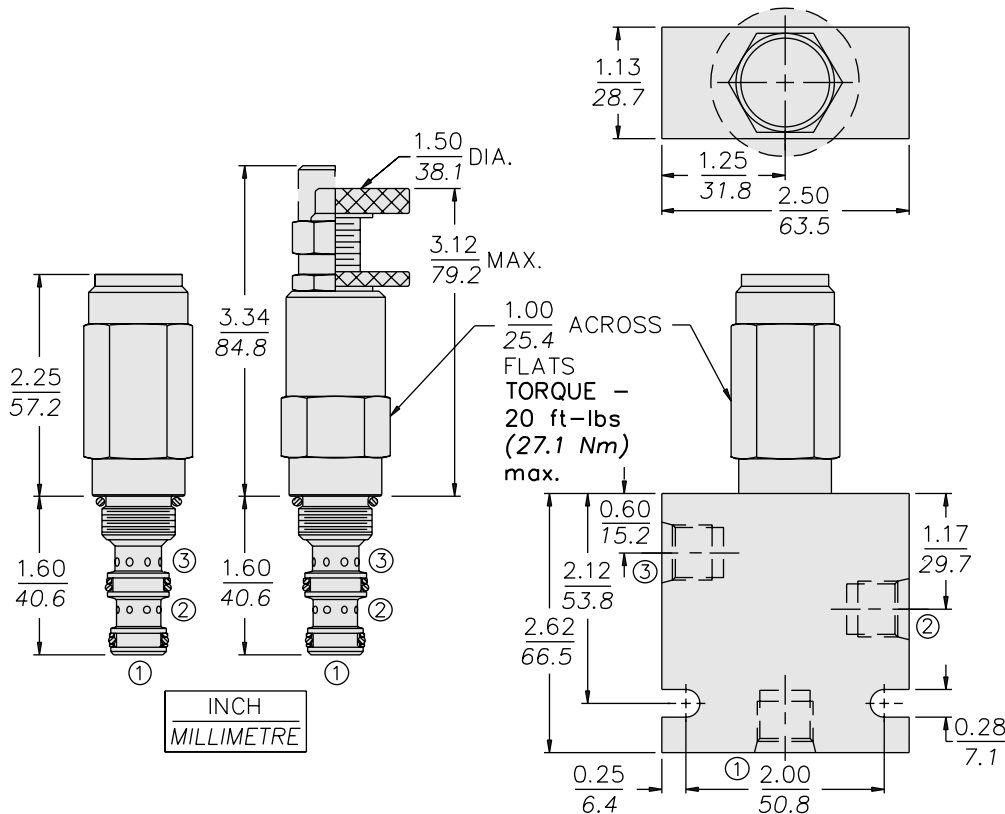
**Installation:** No restrictions; See page 9.020.1

**Cavity:** VC08-3; See page 9.108.1

**Cavity Tool:** CT08-3XX; See page 8.600.1

**Seal Kit:** SK08-3X-BM; See page 8.650.1

## DIMENSIONS



## MATERIALS

**Cartridge:** Weight: 0.25 kg. (0.55 lbs.)  
Steel with hardened work surfaces.  
Zinc-plated exposed surfaces.  
Buna N O-rings and back-ups standard. Anodized aluminum knob.

**Standard Ported Body:** Weight: 0.27 kg. (0.60 lbs.) Anodized high-strength 6061 T6 aluminum alloy, rated to 207 bar (3000 psi). Ductile iron bodies available; dimensions may differ. See page 8.008.1

## TO ORDER

PR08-32 - - - /			
Adjustment Option		Setting in bar <sup>†</sup>	
1/4 in. Hex Allen Head	A	(Blank)	for Adjustable, or Specify, for example:
1-1/2 in. Dia. Alum. Knobs	B	M25	25 bar
Option A with Cover Cap	C	M100	100 bar
Factory Preset Non-Adjst.	F	Setting in psi <sup>†</sup>	
Factory Preset;	H	(Blank)	for Adjustable, or Specify, for example:
Hidden Adjustment	L	9.0	900 psi
Option C w/ Lockwire Holes		21.0	2100 psi
Porting		Spring Range	
Cartridge Only	0	3	3.4 to 20.7 bar (50 to 300 psi)
SAE 4	4T	6	10.4 to 41.4 bar (150 to 600 psi)
SAE 6	6T	12	20.7 to 82.8 bar (300 to 1200 psi)
1/4 in. BSP*	2B	22	34.5 to 151.7 bar (500 to 2200 psi)
3/8 in. BSP*	3B	Seals	
		Buna N (Std.)	N
		Fluorocarbon	V

\*BSP Body; U.K. Mfr Only

<sup>†</sup>Adjustable valves will be preset to approx. 50% of spring max. potential.